

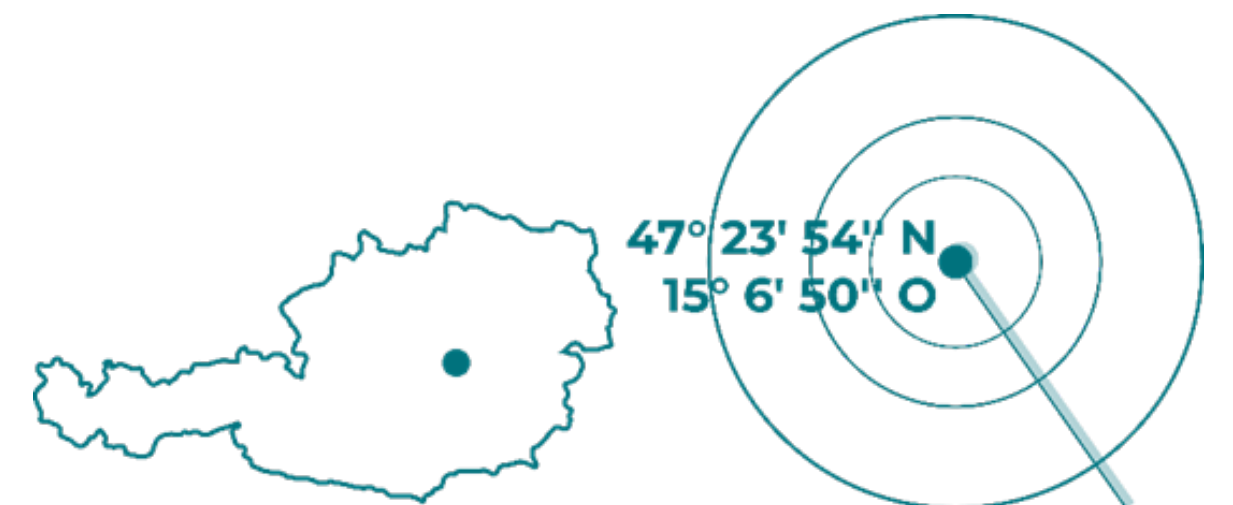


WHERE RESEARCH MEETS THE FUTURE



# OVERVIEW

- **Montanuniversität Leoben**
  - About us, Campus, our „DNA“
  - European University, Research Networks, Competence Centers
  - Study Programms
- **Study abroad at MUL**
  - MIRO
  - Join us @MUL
  - Nomination & Application Infos
  - Accomodation & Living
  - Incoming Experiences



# ABOUT US

- **Technical University** -founded in 1840
- The academic chairs are spread across **12 departments**
- **13 Bachelor Programs & 25 Master Programs**
- **3000 Students** from 89 different nations
- **5:1 student : teacher ratio**
- **300 labs & workshops** - excellent research infrastructure
- **26% female students** (very high for a technical university )

# CAMPUS



- A 1 ----- **Main Building, Franz-Josef-Straße 18**
- 2 ----- **Rittinger Building**
- 3 ----- **Chemistry Building**
- 4 ----- **Environmental Protection Building**
- 5 ----- **Metallurgy Building**
- 6 ----- **Workshops**
- 7 ----- **Archduke Johann Building**

- B ----- **Peter Tunner Building, Peter Tunner-Straße 5**
- C ----- **Petroleum Engineering, Parkstraße 27**
- D ----- **Technology Transfer Centre, Peter Tunner-Straße 25**
- E ----- **Raw Materials and Materials Centre, Erzherzog Johann-Straße 3**
- F ----- **Materials Innovation Centre, Roseggerstraße 12**
- G ----- **Polymer Engineering Centre, Otto Glöckel-Straße 2**
- H ----- **Academy Montanuniversität Leoben, Peter Tunner-Straße 15**
- I ----- **Raw Materials Innovation Centre, Roseggerstraße 11a**
- J ----- **Parkstrasse 31, Parkstrasse 31**
- K ----- **Study Centre, Peter Tunner-Straße 23**
- R ----- **Centre for Applied Technology, Peter Tunner-Straße 19**
- S ----- **Austrian Foundry Research Institute, Parkstraße 21**
- T ----- **Austrian Academy of Sciences, Jahnstraße 12**

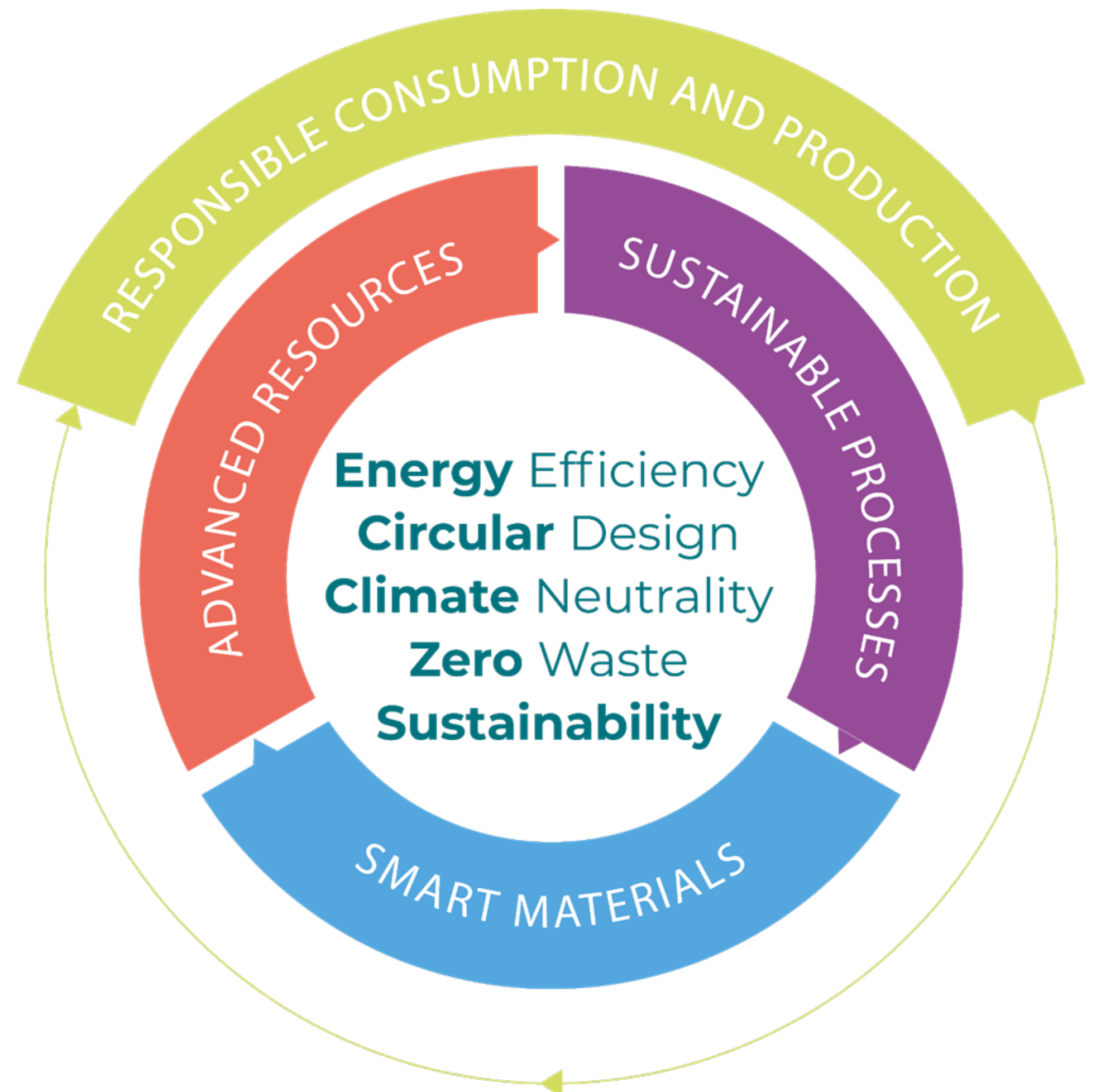
# MU Leoben – Our ‘DNA’

The major social challenges of our time lie in the areas of resources, climate, energy and the environment.

At Montanuniversität Leoben, these challenges are mainly tackled using technical and scientific methods. We stand for excellent science, outstanding education and top performance in the three areas of expertise **Advanced Resources, Sustainable Processes and Smart Materials**.

These are embedded in the philosophy of Responsible Consumption and Production.

Five core values - our "DNA" - determine everything we do: **Energy Efficiency, Circular Design, Climate Neutrality, Zero Waste and Sustainability**.



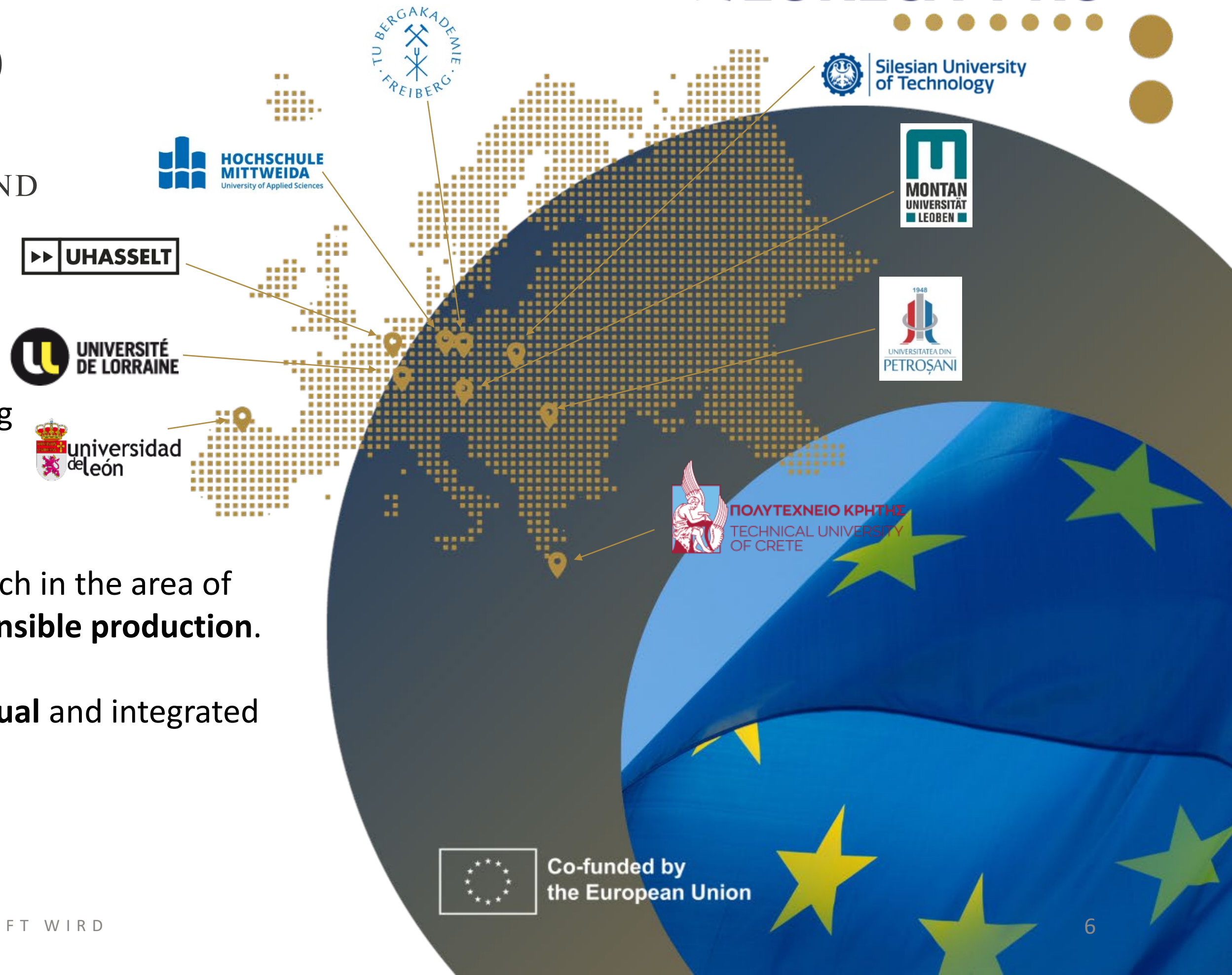
# EURECA-PRO

EUROPEAN UNIVERSITY ON  
RESPONSIBLE CONSUMPTION AND  
PRODUCTION

EURECA-PRO is an **alliance**, consisting  
of 9 partners from 8 different  
**European countries**.

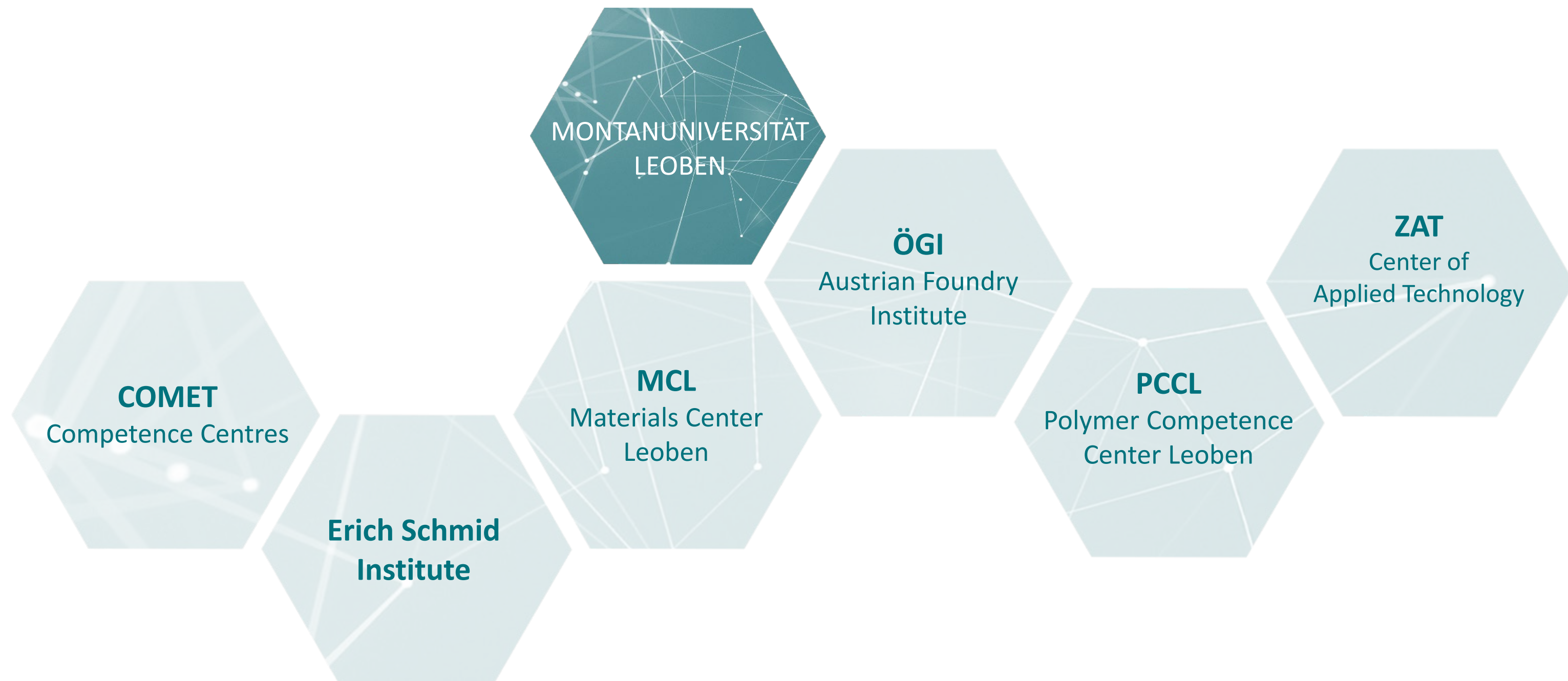
Objective: To study, teach and research in the area of  
**responsible consumption** and **responsible production**.

The long-term goal is a **common virtual** and integrated  
European **campus** by 2040.



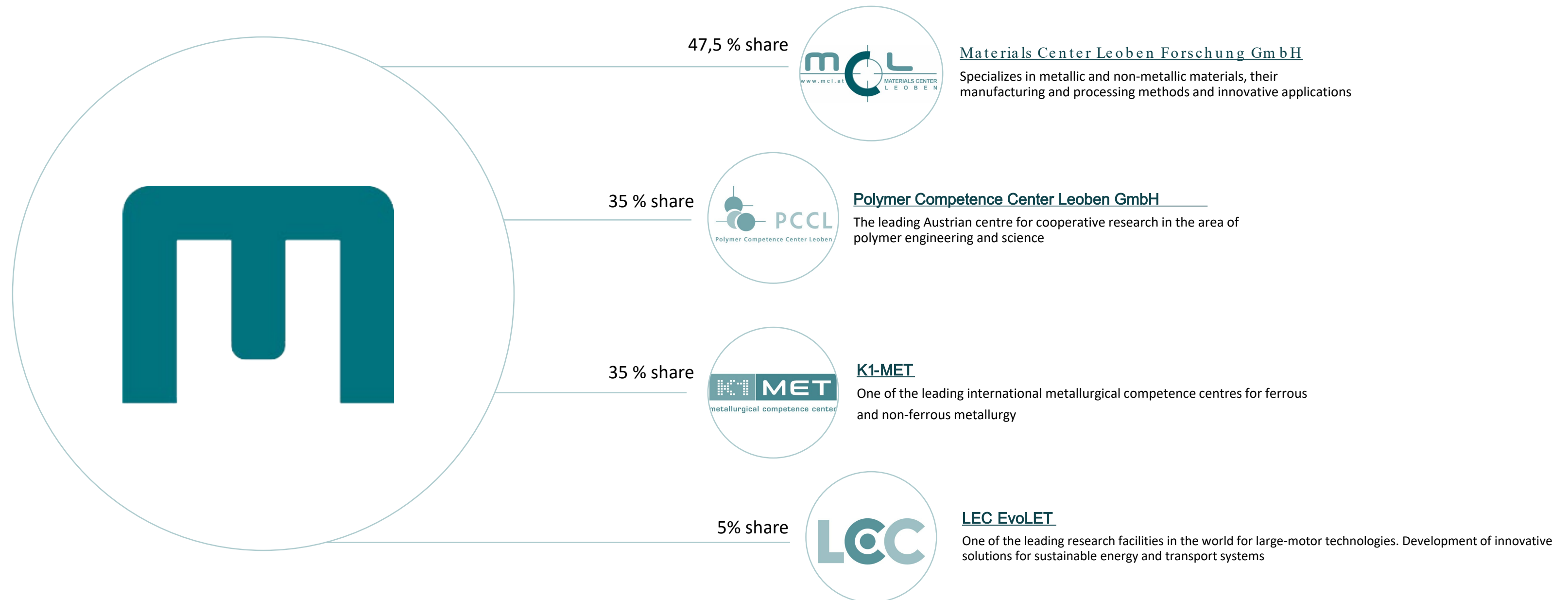
# RESEARCH NETWORKS

Networking with partners from **business and science** throughout Austria



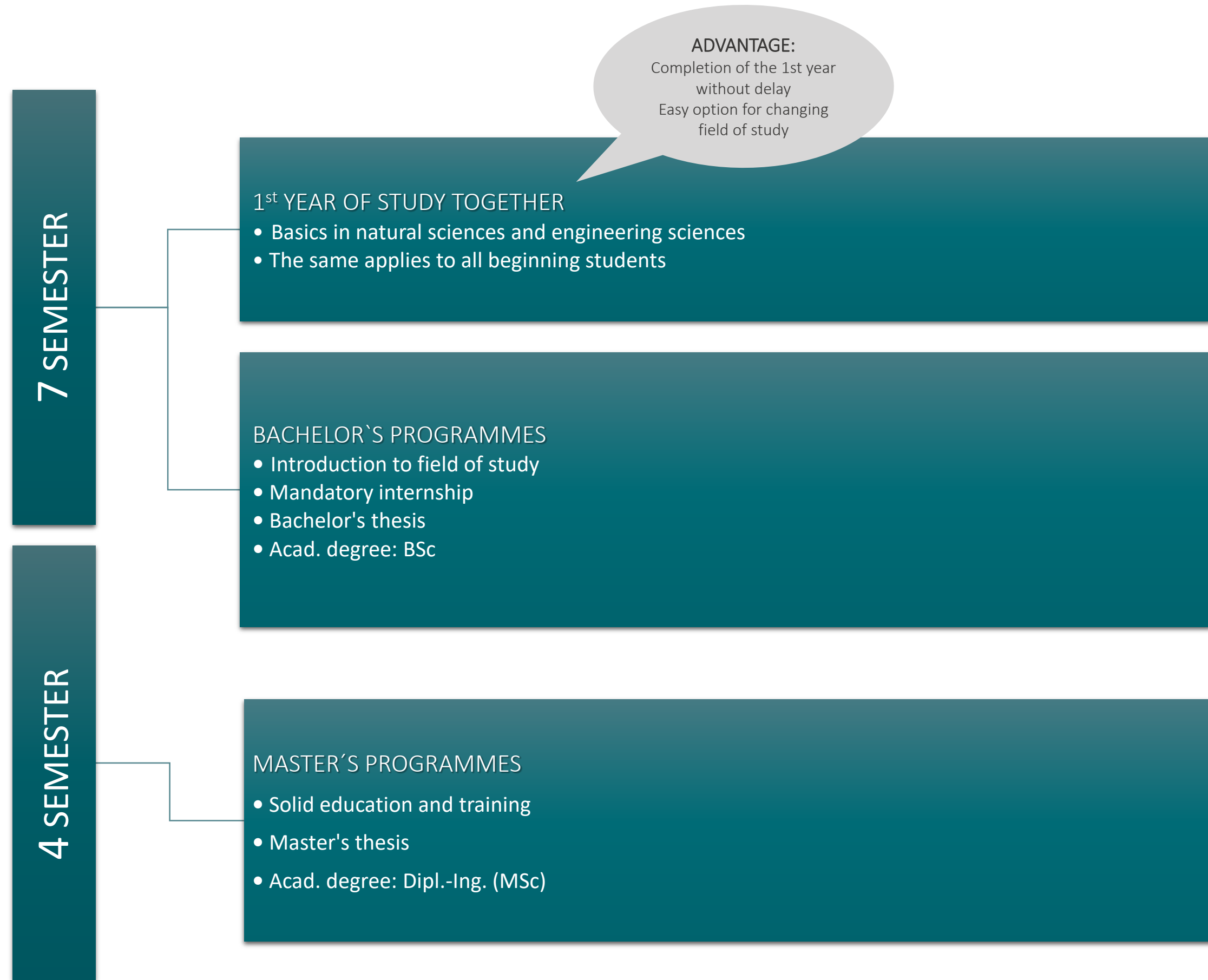
# COMPETENCE CENTRES

COMET Competence Centres conduct application-oriented **cutting-edge research at the highest level**





# STUDY PROGRAMME



# BACHELOR 'S PROGRAMMES

## ADVANCED RESOURCES //DE

---

Applied Geosciences

---

Energy Engineering

---

Geoenergy Engineering

---

Mineral Resources Engineering

---

## SMART MATERIALS //DE

---

Materials Science and  
Technology

---

## SUSTAINABLE PROCESSES //DE

---

Industrial Data Science

---

Industrial Logistics

---

Mechanical Engineering

---

Recycling Technology

---

Metallurgy and Metal Recycling

---

Environmental and Climate Protection  
Technology

---

## RESPONSIBLE CONSUMPTION AND PRODUCTION //EN

---

Circular Engineering

---

Responsible Consumption and  
Production (EURECA-PRO)

---

# MASTER'S PROGRAMMES Dipl.-Ing. (MSc)

## ADVANCED RESOURCES

Applied Geosciences //EN

Geoenergy Engineering //EN

Mining and Tunnelling//EN

Raw Materials Engineering //EN

International Study Program in  
Petroleum Engineering //EN

Energy Engineering //DE

Industrial Management and Business  
Administration //DE

## SUSTAINABLE PROCESSES

Metallurgy //DE+EN

Mechanical Engineering //DE

Industrial Logistics //DE

Industrial Data Science //EN

Environmental and Climate  
Protection Technology//DE

Recycling //DE

## SMART MATERIALS

Materials Science //DE

Polymer Engineering and  
Science //DE

# MASTER'S PROGRAMMES MSc

## ADVANCED RESOURCES

---

International Master of Science in  
Advanced Mineral Resources  
Development //EN

---

International Master of Science in  
Building Materials and Ceramics  
//EN

---

International Master in Petroleum  
Engineering //EN

---

International Master of Science in  
Applied and Exploration Geophysics  
//EN

---

EM Joint Master in Sustainable  
Mineral and Metal Processing  
Engineering //EN

## SMART MATERIALS

---

Advanced Materials Science and  
Engineering (AMASE) //EN

## SUSTAINABLE PROCESSES

---

International Master in  
Sustainable Materials //EN

---

Safety and Disaster  
Management //EN

## RESPONSIBLE CONSUMPTION AND PRODUCTION

---

Circular Engineering //EN

---

Responsible Consumption and  
Production (EURECA-PRO) //EN

# INTERNATIONAL MASTER'S PROGRAMMES

## ADVANCED RESOURCES

---

International Master of Science  
in Advanced Mineral Resources  
Development (AMRD) //EN

---

International Master of Science  
in Building Materials and  
Ceramics (BMC) //EN

---

International Master of Science  
in Applied and Exploration  
Geophysics (IMAGE) //EN

---

Joint International Master  
Program in Petroleum  
Engineering (JIMP) //EN

---

EM Joint Master in Sustainable  
Mineral and Metal Processing  
Engineering // EN

## SMART MATERIALS

---

Advanced Materials Science and  
Engineering (AMASE) //EN

## SUSTAINABLE PROCESSES

---

Sustainable Mineral and Metal  
Processing Engineering (PROMISE)  
//EN

---

International Master in Sustainable  
Materials (SUMA) //EN

## RESPONSIBLE CONSUMPTION AND PRODUCTION

---

Responsible Consumption and  
Production (EURECA-PRO) (RCP)  
//EN

# STUDY ABROAD

at Montanuniversität Leoben



„Life is a journey , choose yours !“

We ...

- ... support exchange students who wish to study at MUL
- ... assist with exchange programs for students, researchers and staff of MUL
- ... offer special services for international researchers and staff through the Welcome Center
- ... strengthen cooperation with partner institutions worldwide

# JOIN US @MUL

- You want to spend a semester or a whole academic year at Montanuniversität Leoben (MUL)?
  - an exchange semester/year
  - an Erasmus+ internship
  - work as a guest researcher at our university
- We will provide you the most important information for the necessary preparations and your stay with us



# NOMINATION PROCESS

## Nomination through the home university

- Partner university should nominate the students sending an email to `incoming@unileoben.ac.at` with following information of the nominated students
  1. Last name,
  2. Name,
  3. Date of birth,
  4. Level (BSc/MSc/PhD) and field of study,
  5. E-mail address

# APPLICATION

The following application documents are required in

**DIGITAL form**

1. MIRO Application Form for Incoming Students
2. Learning Agreement
3. Proof of Language Level English or German (MUL Language Proficiency Report: B2/ TOEFL 78/ IELTS: 6.0)
4. Curriculum Vitae
5. Transcript of records in ENGLISH or German
6. Copy of passport/ ID (ID= only valid for Europeans)
7. For MSc or PhD students: BSc or MSc certificate



MIRO  
DOWNLOAD  
PORTAL

# APPLICATION

## Extra requirements for applicants from outside the EU/EER –territory

8. Financial capacity report
9. Confirmation of insurance (travel health, accident, liability)

## For applicants whose stay is focused on research/ writing an academic paper

10. Supervisor request form (MUL template can be found at downloaded from MO)

## For free movers applicants

11. Confirmation of registration in another university

# DEADLINES

## Winter semester:

- Nomination deadline: May 1st
- Application deadline for international students: May 15th
- Application deadline for EU/EEA students: May 31st

## Summer semester:

- Nomination deadline: October 1st
- Application deadline for international students: October 15th
- Application deadline for EU/EEA students: October 31s

# ADVANTAGES

**No tuition  
fee \***

**Intensive English  
Course and  
introduction week**

**350+ courses  
offered  
in English  
open to exchange  
students**

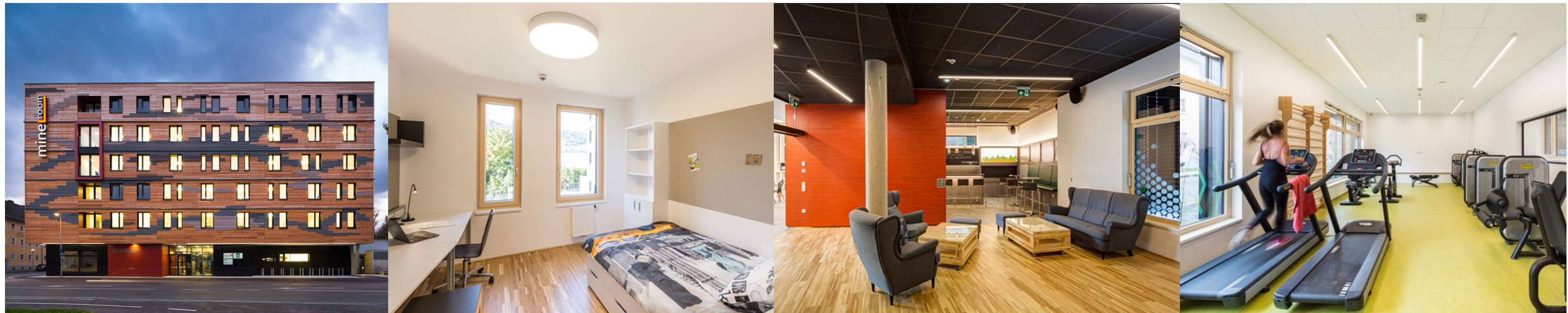
**Personalized  
teaching  
5:1 ratio**

**Field  
trips /free fun  
days**

**Courses of the master program are open to Bachelor students  
if 90 ECTS are covered at the home university**

# ACCOMMODATION

- Many modern student accommodations are available for students around town
- We strongly recommend to stay in MINEROOM. All our MIRO events are held there as well.



Images: [www.oeadstudenthousing.at/en/accommodation/leoben/oead-guesthouse-mineroom](http://www.oeadstudenthousing.at/en/accommodation/leoben/oead-guesthouse-mineroom)

# LIVING IN LEOBEN

- Hiking, biking & nature
- Events, shopping & wellness
- Local cuisine & culture
- Safety & high standard of living
- International student community
- Excellent train connections to travel within and outside of Austria



Images: © MU/Truederer, Foto Feislinger

# INCOMING EXPERIENCES

Leoben was my home for a year during my academic exchange, and this small town now has a huge space in my heart. I am grateful to Montanuniversität for opening its doors to me and allowing me to experience it's high-quality education, as well as so many experiences that I will always cherish.

*Carolina Ruiz Valdez*  
Mexico



"Leoben is one of the smallest city where I have ever lived, but in fact Leoben is really big in many other ways. I found really nice people from everywhere (literally) with interesting stories. Montanuniversität Leoben completely exceed my expectations, the quality of the lectures and the amazing installations of the labs. This experience is something that for sure I won't forget."

*Adrián Fernando López Martínez*  
Spain



At Montanuniversitaet I found very experienced professors and high technological laboratories, it has been expanding my understanding of my course and my goals as an engineer. Furthermore, now I understand, our home may be the world and there are no borders for finding new families.

*Jefferson Araujo*  
Brazil





DO YOU  
HAVE ANY  
QUESTIONS?



THANK YOU FOR  
YOUR ATTENTION!

karina.michelini-rodriguez@unileoben.ac.at



[www.instagram.com/miro\\_montanuni](https://www.instagram.com/miro_montanuni)



[www.facebook.com/MULmiro](https://www.facebook.com/MULmiro)



[international@unileoben.ac.at](mailto:international@unileoben.ac.at)